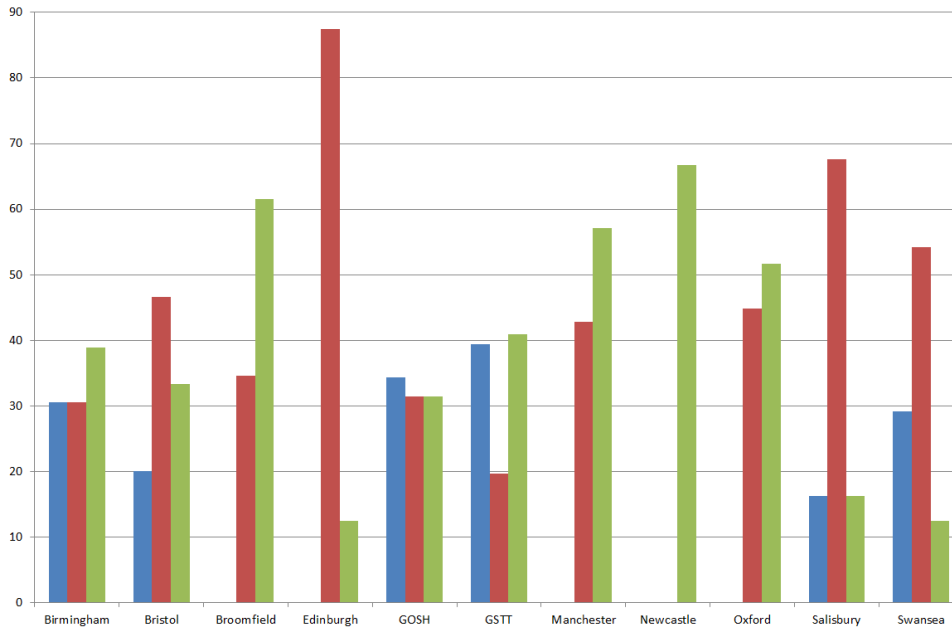


# Cleft Collective Speech and Language Study Monthly Update!

Issue 16, February 2018

**Percentage of a sites recruitment split by year**



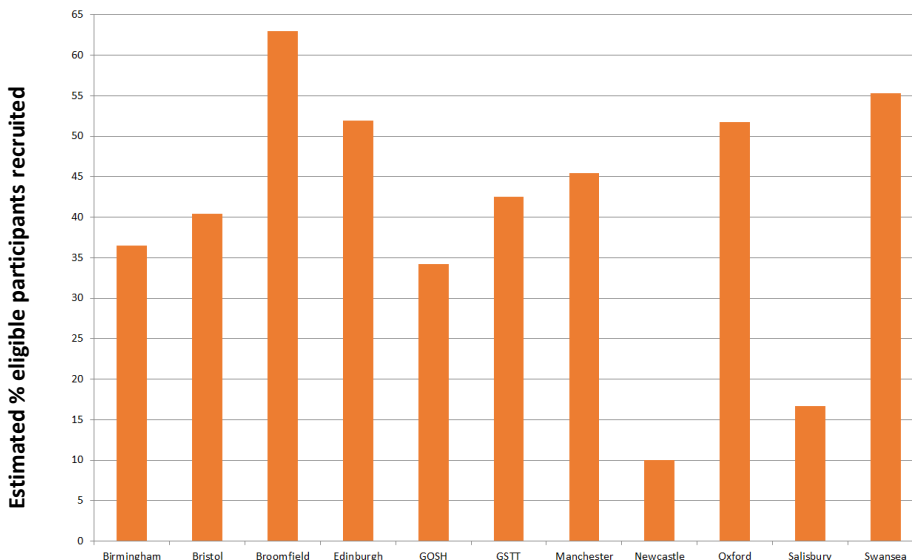
**Key:**

The **blue** columns show the percentage of the total number of recruits for each site from 2015. The **red** columns show the percentage number recruited in 2016. The **green** columns show the percentage number recruited in 2017.

**Other news**

*We have a minor amendment going through and you and your research department will receive copies as soon as we have them*

**Estimated percentage of eligible participants recruited at each site to end of January 2018**



*A belated  
Happy New Year!*



*As always please do get in touch with us if you need any resources, or if you have any questions.*

[Sam.harding@speech-therapy.org.uk](mailto:Sam.harding@speech-therapy.org.uk)



0117 4143957