

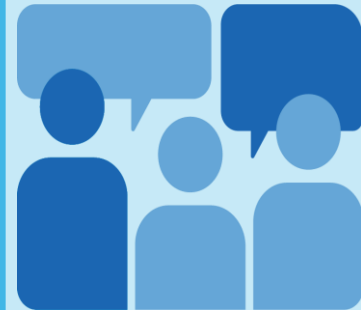
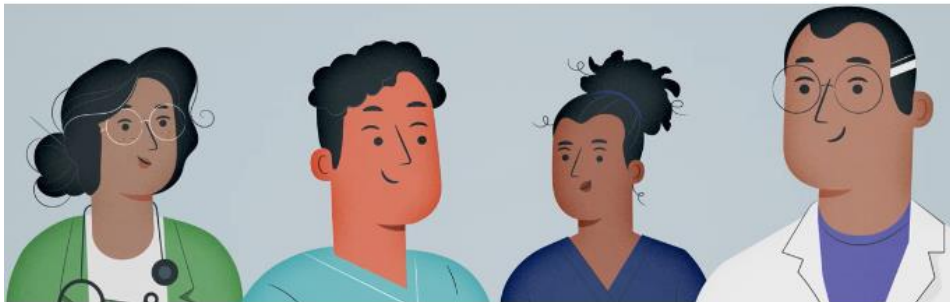


Cleft Collective Speech and Language Study

Monthly Update!

Issue 44 November 2022

The study has been registered for the Associate PI Scheme and has been added to the List of Registered Studies on the [NIHR Associate PI Scheme Website](#). This means members of the teams are now able to register to be Associate PIs for this study, having obtained approval from their local PI, using the [NIHR Associate PI Scheme Applicant Registration](#).



As always please do get in touch with us if you need any resources, or if you have any questions.

Samantha.Harding@NBT.nhs.uk 0117 4143957

What is the Associate Principal Investigator Scheme?

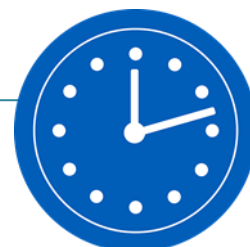
The Associate PI Scheme is a six month in-work training opportunity, providing practical experience for healthcare professionals starting their research career. People who would not normally have the opportunity to take part in clinical research in their day to day role have the chance to experience what it means to work on and deliver a NIHR portfolio trial under the mentorship of an enthusiastic Local PI.

Participating healthcare professionals receive formal recognition of engagement in NIHR Portfolio research studies through the certification of Associate PI status, endorsed by the NIHR and Royal Colleges.

Study Substantial Amendment 6

The study has just received approval for its 6th substantial amendment covering:

- Inclusion of SLT intervention questionnaire data collection up to age 5 years 11 months.
- SLT assessment forms amended to enable SLTs to indicate how the assessment was carried out and clarifying age of assessments in protocol.
- An extension to the end date of the study to 30/9/27



In the next update we will share how recruitment is progressing in total and how this is represented across the different study sites.