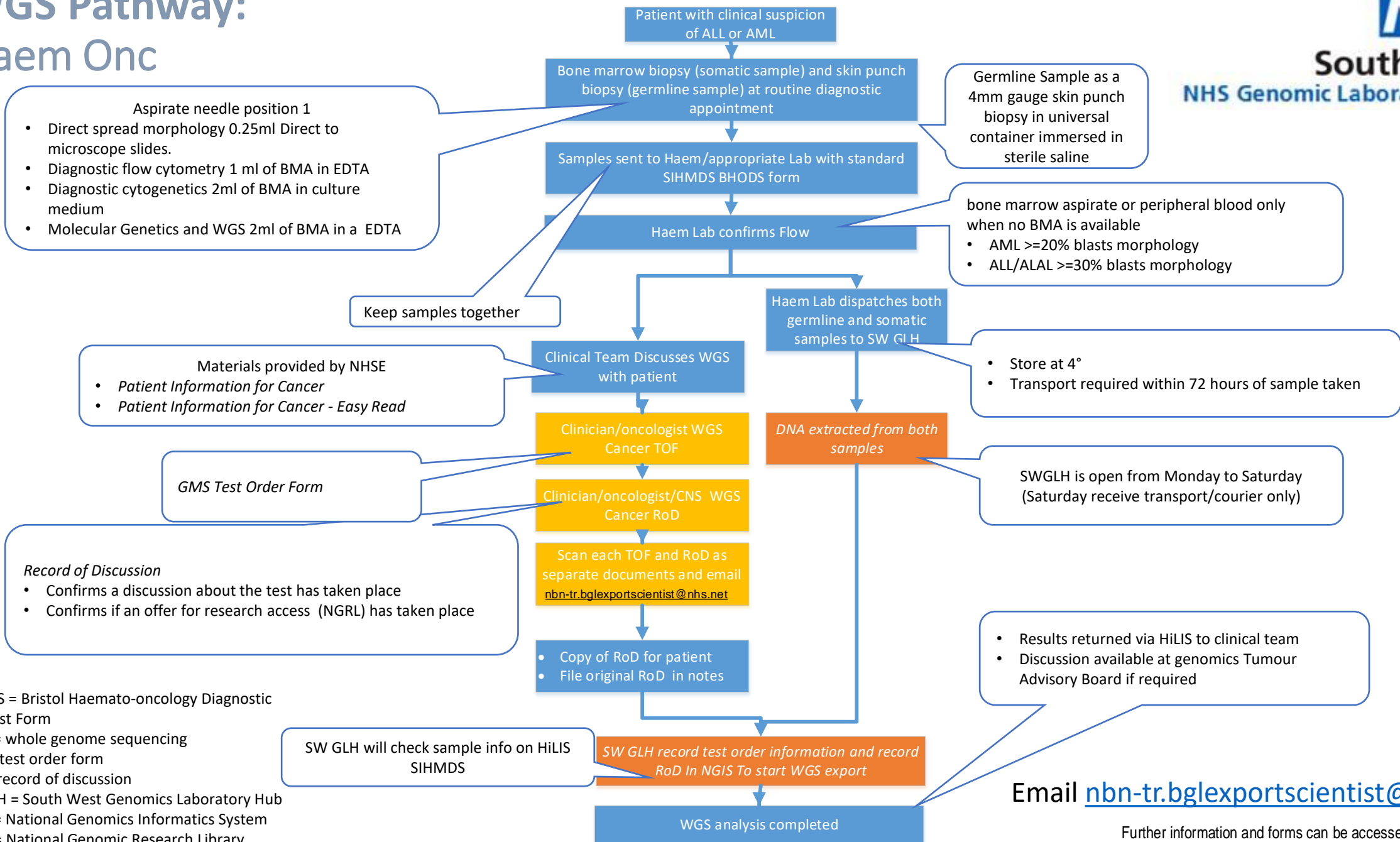


# WGS Pathway: Haem Onc



BHODS = Bristol Haemato-oncology Diagnostic Request Form  
 WGS = whole genome sequencing  
 TOF = test order form  
 RoD= record of discussion  
 SWGLH = South West Genomics Laboratory Hub  
 NGIS = National Genomics Informatics System  
 NGRL= National Genomic Research Library

Email [nbn-tr.bglexportscientist@nhs.net](mailto:nbn-tr.bglexportscientist@nhs.net)

Further information and forms can be accessed at <https://www.nbt.nhs.uk/south-west-genomic-laboratory-hub>