

# Organisational structure chart

## Clinical Divisions

March 2026



# Group Board Members and NBT Hospital Management Team



**Maria Kane**  
 Group Chief Executive



**Ingrid Barker**  
 Group Chair

## Non-Executive Directors



**Neil Kemsley**  
 Group Chief Finance and Estates Officer



**Tim Whittlestone**  
 Group Chief Medical and Innovation Officer



**Steve Hams**  
 Group Chief Nursing and Improvement Officer



**Paula Clarke**  
 Group Formation Officer



**Neil Darvill**  
 Group Chief Digital Information Officer



**Jenny Lewis**  
 Group Chief People and Culture Officer



**Sarah Purdy**  
 (Vice Chair, NBT)



**Martin Sykes**  
 (Vice Chair, UHBW)



**Roy Shubhabrata**



**Stuart Walker**  
 Hospital Managing Director (UHBW)



**Glyn Howells**  
 Hospital Managing Director (NBT)

## NBT Hospital Management Team



**Sam Patel**  
 Medical Director



**Su Monk**  
 Interim Director of Nursing



**Nick Smith**  
 Chief Operating Officer



**Sarah Margetts**  
 Director of People



**Elizabeth Poskitt**  
 Director of Finance



**Kathryn Kaboutian**  
 Group Deputy Chief Digital Information Officer



**Linda Kennedy**



**Marc Griffiths**



**Richard Gaunt**



**Shawn Smith**  
 (NBT)



**Sue Balcombe**  
 (UHBW)



**Poku Pipim Osei**  
 (Non-voting position)

# 5 Clinical Divisions

**Surgery, Critical  
Care & Renal  
(ASCR)**



**Clinical Director**  
Andrew Smith

**Core Clinical  
Services**



**Clinical Director**  
Eleanor Ngan Soo

**Medicine**



**Clinical Director**  
David Shipway

**Neurological &  
Musculoskeletal  
Sciences (NMSK)**



**Clinical Director**  
Harsha Gunawardena

**Women &  
Children's  
Health**



**Clinical Director**  
Jane Mears

# Anaesthesia, Surgery, Critical Care and Renal (ASCR)

## ASCR management team



**Clinical Director**  
Andrew Smith



**Divisional Operations Director**  
Harriet Livesey



**Divisional Director of Nursing**  
Shelley Thomas

**Deputy Divisional Operations Director**  
Kane Sullivan

**Deputy Divisional Director of Nursing**  
Matthew Crabtree & Kelly Bullock

## ASCR corporate support



**Interim Finance Partner**  
Pawel Abramik



**People Partner**  
Stephen Adams



**BI Analyst**  
Catherine Ridley

| Specialties                | Critical Care                             | General Surgery                                              | Vascular Network | Breast Care     | Plastics, Burns & Dermatology                                                                         | Urology          | Anaesthesia inc, Pre-operative Assessment | Renal & Transplantation                                       | Elective Care / Theatres     | Emergency Care       | NHS @ home         |
|----------------------------|-------------------------------------------|--------------------------------------------------------------|------------------|-----------------|-------------------------------------------------------------------------------------------------------|------------------|-------------------------------------------|---------------------------------------------------------------|------------------------------|----------------------|--------------------|
| <b>Specialty Lead</b>      | Chris Newell                              | <b>UGI:</b> Chris Wong<br><b>Colorectal:</b> Anne Pullyblank | Devan Thavarajan | Michelle Mullan | <b>Plastic Surgery:</b> Ewan Wilson<br><b>Burns:</b> Chris Wearn<br><b>Dermatology:</b> Helen Audrain | Aditya Manjunath | Clinton Lobo                              | <b>Renal:</b> Jack Galliford<br><b>Transplant:</b> Sam Turner | Philippa Jackson             | Christopher Thompson | Rebecca Winterborn |
| <b>General Managers</b>    | Jay Parry                                 | Joshua Williams-Pitt                                         | Liam Hancock     | Jay Parry       | Joanne Smart                                                                                          | John Kirby       | James Taylor                              | Liam Hancock                                                  | James Taylor                 | Joshua Williams-Pitt | Kane Sullivan      |
| <b>Lead Nurse / Matron</b> | Valentien Crook-Jones<br>Morwenna Maddock | Rosie Malins                                                 | Michelle Dyer    | Siny Thankachan | Nicola Mackey                                                                                         | Rosie Malins     | Dawn Hird                                 | Lisa Ford                                                     | Dawn Hird / Damien Crosswell | Lucinda Saunders     |                    |

# Core Clinical Services

## Core Clinical Services management team



Clinical Director  
Eleanor Ngan Soo



Divisional  
Operations Director  
Sarah Robinson

Deputy Divisional  
Operations Director  
Nickola Gipp



Divisional  
Director of Nursing /  
Head of Professions  
Liz Varian-Peacock

## Core Clinical Services corporate support



Finance Business  
Partner  
Claire Mitchell



People Business  
Partner  
Karen Cooke

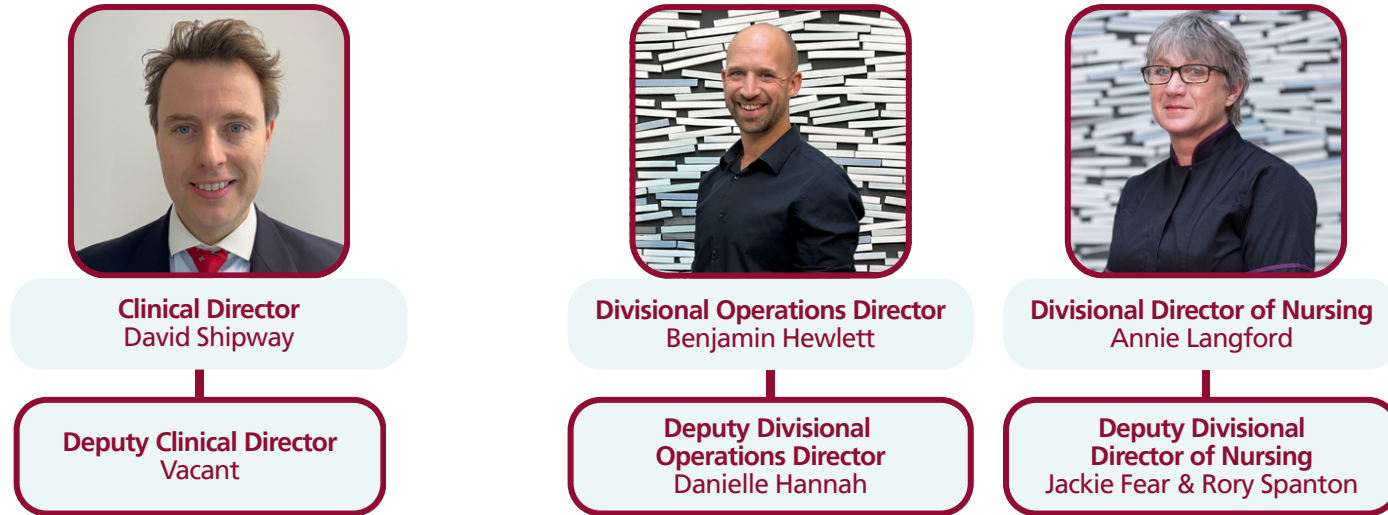


BI Analyst  
Mary Wright

| Specialties                      | Imaging                                                                                                                                                                                                                                                                                                                                                                                                                                                                                                                                                                                                                                         | Pathology                                                                                                                                                                                                                                                                                                                                                                                                                                                                                                                                                                                                                                    | Pharmacy                                                                                                                                                                                                                                                                                                                                                    | Endoscopy                                                                                                                                                                                     | Therapies                                                                                                                                                                                                                                                                                                          | Centralised Outpatient Services                                                                           | Clinical Equipment Services                                                                                                                                                                                                                                                                                                                                                                         |
|----------------------------------|-------------------------------------------------------------------------------------------------------------------------------------------------------------------------------------------------------------------------------------------------------------------------------------------------------------------------------------------------------------------------------------------------------------------------------------------------------------------------------------------------------------------------------------------------------------------------------------------------------------------------------------------------|----------------------------------------------------------------------------------------------------------------------------------------------------------------------------------------------------------------------------------------------------------------------------------------------------------------------------------------------------------------------------------------------------------------------------------------------------------------------------------------------------------------------------------------------------------------------------------------------------------------------------------------------|-------------------------------------------------------------------------------------------------------------------------------------------------------------------------------------------------------------------------------------------------------------------------------------------------------------------------------------------------------------|-----------------------------------------------------------------------------------------------------------------------------------------------------------------------------------------------|--------------------------------------------------------------------------------------------------------------------------------------------------------------------------------------------------------------------------------------------------------------------------------------------------------------------|-----------------------------------------------------------------------------------------------------------|-----------------------------------------------------------------------------------------------------------------------------------------------------------------------------------------------------------------------------------------------------------------------------------------------------------------------------------------------------------------------------------------------------|
| <b>Clinical Specialty Lead</b>   | Vacant                                                                                                                                                                                                                                                                                                                                                                                                                                                                                                                                                                                                                                          | Isabel Baker                                                                                                                                                                                                                                                                                                                                                                                                                                                                                                                                                                                                                                 |                                                                                                                                                                                                                                                                                                                                                             | Sam Murray                                                                                                                                                                                    |                                                                                                                                                                                                                                                                                                                    |                                                                                                           |                                                                                                                                                                                                                                                                                                                                                                                                     |
| <b>Specialty Management Team</b> | <p><b>Imaging Services Manager:</b><br/>Fiona Rooke</p> <p><b>Deputy Imaging Services Manager:</b><br/>Sean Fry</p> <p><b>MRI Modality Lead:</b><br/>Elizabeth Cullimore</p> <p><b>CT Modality Lead:</b><br/>James Bonner</p> <p><b>Ultrasound Modality Lead:</b><br/>Patricia Ahmed</p> <p><b>Plain Film Modality Lead:</b><br/>Paul Hocking</p> <p><b>Interventional Radiology / Fluoroscopy Modality Lead:</b><br/>Rebecca Warren</p> <p><b>Nuclear Medicine Modality Lead:</b><br/>Raquel Menezes</p> <p><b>Imaging Quality Manager:</b><br/>Penny Parcell</p> <p><b>Head of Medical Photography &amp; Illustration:</b><br/>Dawn White</p> | <p><b>Director of Pathology Sciences:</b><br/>Nina Stock</p> <p><b>Blood Sciences Lead:</b><br/>Allison Brixey</p> <p><b>Blood Sciences Operations Manager:</b><br/>Ellen Roberts</p> <p><b>Head of Bristol Genetics Laboratory:</b><br/>Maggie Williams</p> <p><b>Bristol Genetics Laboratory Operations Manager:</b><br/>Elaine Watson</p> <p><b>Cellular Pathology Laboratory Manager:</b><br/>Saima Rasib</p> <p><b>Neuropathology Laboratory Manager:</b><br/>Deepthi Chandy</p> <p><b>Cellular Pathology / Neuropathology Operations Manager:</b><br/>Mark Orrell</p> <p><b>Infection Sciences Service Manager:</b><br/>Katy Lomas</p> | <p><b>Director of Pharmacy:</b><br/>Matthew Kaye</p> <p><b>Deputy Director of Pharmacy:</b><br/>Alison Staples</p> <p><b>Associate Director of Pharmacy - Clinical Services:</b><br/>Tom Gruar</p> <p><b>Associate Director of Pharmacy - Operations:</b><br/>Deborah Breton</p> <p><b>Regional Quality Control Laboratory Manager:</b><br/>Chris Marks</p> | <p><b>Endoscopy Services Manager:</b><br/>Fiona Rooke</p> <p><b>Deputy Endoscopy Services Manager:</b><br/>Sean Fry</p> <p><b>Performance and Operations Manager:</b><br/>Matthew Darvill</p> | <p><b>Therapies Quality Manager:</b><br/>Steve Bunce</p> <p><b>Physiotherapy Lead:</b><br/>Kathryn Binns</p> <p><b>Speech &amp; Language Therapy Lead:</b><br/>Catherine Hamilton</p> <p><b>Nutrition &amp; Dietetics Lead:</b><br/>Katherine Barker</p> <p><b>Occupational Therapy Lead:</b><br/>Anne Barraud</p> | <p><b>General Manger:</b><br/>Lorraine Lewis</p> <p><b>Assistant General Manager:</b><br/>Nicky Upton</p> | <p><b>Head of Clinical Equipment Services:</b><br/>Aggie Dimunge</p> <p><b>Quality &amp; Community Manager:</b><br/>Emma Chabowski</p> <p><b>MDSO / Anaesthetics:</b><br/>Paul Derman</p> <p><b>Electronics &amp; Library:</b><br/>Gareth Lewis</p> <p><b>Beds &amp; Mattresses:</b><br/>Kevin Brooksby</p> <p><b>Mechanical:</b><br/>Craig Wheeler</p> <p><b>Training Lead:</b><br/>Lisa Smith</p> |

# Medicine

## Medicine management team



## Medicine corporate support



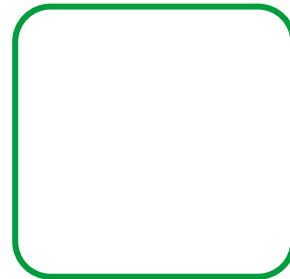
| Specialties       | Custer 1                        |               |                                 |                       |                     |                     | Cluster 2                     |                      |                        |                          | Cluster 3                                |                   |                  |                  |                          | Specialised Services                |                 |                             |                      |                |
|-------------------|---------------------------------|---------------|---------------------------------|-----------------------|---------------------|---------------------|-------------------------------|----------------------|------------------------|--------------------------|------------------------------------------|-------------------|------------------|------------------|--------------------------|-------------------------------------|-----------------|-----------------------------|----------------------|----------------|
|                   | Emergency Medicine              | SDEC          | Acute Medicine                  | Mental Health Liaison | Clinical Psychology | Acute Response Team | Care of the Elderly           | Immunology & Allergy | Medical Virology / HIV | Infectious Diseases      | Substance Misuse Service                 | Hepatology        | Gastroenterology | Medical Day Care | Diabetes & Endocrinology | Respiratory                         | Cardiology      | Palliative Medicine         | Clinical Haematology | Acute Oncology |
| Specialty Lead    | Jayne Mckinlay                  | Sarah Ibitoye | Louise Powter                   | Anish Patel           | Charlie Jones       | Rhiannon Hughes     | Anna O'Brien                  | Mark Gompels         | Phil Bright            | Ed Moran & Megan Jenkins | N/A                                      | Ankur Srivastava  | N/A              | Liz Cheyne       | Milly Clive              | Chih Wong                           | Laura Bernstein | Alastair Whiteway           | N/A                  | N/A            |
| Matron            | Charlotte Chylewski & Anna Bell | N/A           | Emily Watts & Shelly Panayiotou | N/A                   | N/A                 | Lisa Haines         | George Duffield               | N/A                  | Emma Gilchrist         | N/A                      | N/A                                      | Emma Gilchrist    | N/A              | Bev Davies       | Lisa Haines              | N/A                                 | N/A             | N/A                         | N/A                  | N/A            |
| Nurse Lead        | N/A                             | Rachel Dean   | N/A                             | Ben Ford              | N/A                 | N/A                 | N/A                           | Lisa Smith           | N/A                    | N/A                      | Sally Quigley                            | Katharine Caddick | N/A              | N/A              | Nicki Davies             | N/A                                 | N/A             | Sona McIntosh & Lisa Thomas | Aless Bartlett       | N/A            |
| General Manager   | Lorna Gregory                   |               |                                 |                       |                     |                     | Christina Fletcher            |                      |                        |                          | Graham Bartlett                          |                   |                  |                  |                          | Nicola Alfonsi<br>AGM Natalie Smith |                 |                             |                      |                |
| Specialty Manager | Alex O'Donoghue & Elliott Main  |               |                                 |                       |                     |                     | Nia Jenkins Welch             |                      |                        |                          | Abigail Warren & Jade Venning            |                   |                  |                  |                          | Zahra Dahnoun & Lisa Reed           |                 |                             |                      |                |
| Support Manager   | Sophie Power                    |               |                                 |                       |                     |                     | Alexandria Davis & Laura Webb |                      |                        |                          | Kelly West , Courtney Borg & Megan Smith |                   |                  |                  |                          | Kate White & Jade Hinder            |                 |                             |                      |                |

# Neurological & Musculoskeletal Sciences (NMSK)

## NMSK management team



**Clinical Director**  
Harsha Gunawardena



**Divisional Operations Director**  
Ginny Nash

**Deputy Divisional Operations Director**  
Joanna Smithers & Tom Woodward



**Interim Divisional Director of Nursing**  
Hannah Moore

## NMSK corporate support



**Finance Partner**  
Joshua Skinner



**People Partner**  
Hannah Stawrowski



**BI Analyst**  
Sarah Cox

| Specialties            | Cluster 1                     |                          |                | Cluster 2                      |                                   | Cluster 3                                      |                         |               |                 |                 |                 | Cluster 4                                      | Bristol Centre for Enablement | Major Trauma Centre |
|------------------------|-------------------------------|--------------------------|----------------|--------------------------------|-----------------------------------|------------------------------------------------|-------------------------|---------------|-----------------|-----------------|-----------------|------------------------------------------------|-------------------------------|---------------------|
|                        | Neurosurgery                  | Spines                   | Pain           | Elective Orthopaedics          | Trauma                            | Acute Neurology                                | Sub Specialty Neurology | Rheumatology  | Neuropsychiatry | Neuropsychology | Neurophysiology | Stroke                                         |                               |                     |
| <b>Specialty Lead</b>  | Adam Williams                 | Mike Katsihimas          | Shelley Barnes | Mark Crowther                  | Andrew Riddick                    | Justin Pearson                                 | Mark Cossburn           | Lynsey Clarke | Anish Patel     | Angelita Cruz   | Peter Walsh     | James Dodd                                     | Shigong Guo                   | Nirosha De Zoysa    |
| <b>General Manager</b> | Tom Gardener                  |                          |                | Millie Collins                 |                                   | Ellicia Sulway                                 |                         |               |                 |                 |                 | Linda Matthews<br>Jon Porter                   | David Rowland                 | N/A                 |
| <b>Matron</b>          | Debbie Beynon                 |                          |                | Natalie Wood                   |                                   | Rachael Crowley                                |                         |               |                 |                 |                 | Emerline Albano                                | N/A                           | N/A                 |
| <b>Ward Manager</b>    | Helen Lincoln<br>Rosie Morris | Alex Deas<br>Grace Jones | Rose Marriott  | Hiu Ying Harris<br>Helen Jones | Jordan Highnell<br>Elspeth Knight | Tanya Matthews<br>Helen Coxon<br>Maria Arriola |                         | N/A           | Lisa Nikitin    | N/A             | N/A             | Tanya Matthews<br>Helen Coxon<br>Maria Arriola | N/A                           | NA                  |

# Women & Children's Health

## Women & Children's management team



Clinical Director  
Jane Mears



Divisional  
Operations Director  
Claire Weatherall



Divisional  
Director of Midwifery  
Nursing  
Julie Northrop

Deputy Divisional  
Directors of Midwifery  
and Nursing

Laura Gold & Diane  
Dorrington

## Women & Children's corporate support



Finance Partner  
Jess Jones



Interim People Partner  
Rebecca Wright



BI Analyst  
Helen Fenn

| Specialties     | Perinatal                                                                                                                                                                                                                                                                                                                                                                                                                                                                                                                                                         | Gynaecology              |
|-----------------|-------------------------------------------------------------------------------------------------------------------------------------------------------------------------------------------------------------------------------------------------------------------------------------------------------------------------------------------------------------------------------------------------------------------------------------------------------------------------------------------------------------------------------------------------------------------|--------------------------|
| Specialty Lead  | <b>Obstetrics:</b> Dr Joanna Crofts<br><b>NICU:</b> Dr Faith Emery                                                                                                                                                                                                                                                                                                                                                                                                                                                                                                | Dr Chendrihada Madhu     |
| General Manager | Louise Wallace<br>Charlotte Bryan                                                                                                                                                                                                                                                                                                                                                                                                                                                                                                                                 | Aaron Joyce              |
| Matron          | <b>Intrapartum Service and Home Birth Service:</b> Nicola Chinnock<br><b>Community:</b> Margaret Smith<br><b>Antenatal Services: Antenatal Clinic, Fetal Medicine, Screening &amp; Quantock Ward:</b><br>Bonny Wood<br><b>Postnatal Services: Percy Phillips Ward &amp; Transitional Care Ward:</b> Bonny Wood<br><b>Continuous Improvement and Learning Lead:</b> Ruth Gregory and Ella Sandford<br><b>Recruitment, retention and Wellbeing:</b> Liz Haines<br><b>Perinatal Education:</b> Jo Hunt<br><b>NICU and Paediatric Outpatients:</b> Amy Purnell        | Mirko De Santis          |
| Ward Manager    | <b>Percy Phillips Ward:</b> Rachel Cox and Nina Ishii<br><b>Quantock Ward:</b> Carli Roberts<br><b>Triage and Assessment Unit:</b> Lisa Redmayne<br><b>Mendip Birth Centre:</b> Abi Johnson<br><b>Home Birth Team:</b> Beth Connelly<br><b>Central Delivery Suite:</b> Bridget Touhy and Emily Slater<br><b>Antenatal Clinic:</b> Amy Crosby<br><b>NICU:</b> Fiona Buckley<br><b>Community:</b> Hayley Scull, Vanessa Lanham-Cook, Kate Thomas, Libby Hutchinson, Gaynor Jackson, Tracy Wharrier Monica Carter, Bethany Rowell, Eloise Alexander, Kelly Partridge | Cotswold Ward: Nix Carey |