

Organisational structure chart

Clinical Divisions

May 2026



Group Board Members and NBT Hospital Management Team



Maria Kane
 Group Chief Executive



Ingrid Barker
 Group Chair

Non-Executive Directors



Neil Kemsley
 Group Chief Finance and Estates Officer



Tim Whittlestone
 Group Chief Medical and Innovation Officer



Steve Hams
 Group Chief Nursing and Improvement Officer



Paula Clarke
 Group Formation Officer



Neil Darvill
 Group Chief Digital Information Officer



Jenny Lewis
 Group Chief People and Culture Officer



Sarah Purdy
 (Vice Chair, NBT)



Martin Sykes
 (Vice Chair, UHBW)



Roy Shubhabrata



Stuart Walker
 Hospital Managing Director (UHBW)



Glyn Howells
 Hospital Managing Director (NBT)

NBT Hospital Management Team



Sam Patel
 Medical Director



Su Monk
 Interim Director of Nursing



Nick Smith
 Chief Operating Officer



Sarah Margetts
 Director of People



Elizabeth Poskitt
 Director of Finance



Kathryn Kaboutian
 Group Deputy Chief Digital Information Officer



Linda Kennedy



Marc Griffiths



Richard Gaunt



Shawn Smith
 (NBT)



Sue Balcombe
 (UHBW)



Poku Pipim Osei
 (Non-voting position)

5 Clinical Divisions

**Surgery, Critical
Care & Renal
(ASCR)**



Clinical Director
Andrew Smith

**Core Clinical
Services**



Clinical Director
Eleanor Ngan Soo

Medicine



Clinical Director
David Shipway

**Neurological &
Musculoskeletal
Sciences (NMSK)**



Clinical Director
Harsha Gunawardena

**Women &
Children's
Health**



Clinical Director
Jane Mears

Anaesthesia, Surgery, Critical Care and Renal (ASCR)

ASCR management team



Clinical Director
Andrew Smith



Divisional Operations Director
Harriet Livesey



Divisional Director of Nursing
Shelley Thomas



Deputy Divisional Operations Director
Kane Sullivan



Deputy Divisional Director of Nursing
Matthew Crabtree & Kelly Bullock

ASCR corporate support



Interim Finance Partner
Pawel Abramik



People Partner
Stephen Adams



BI Analyst
Catherine Ridley

Specialties	Critical Care	General Surgery	Vascular Network	Breast Care	Plastics, Burns & Dermatology	Urology	Anaesthesia inc, Pre-operative Assessment	Renal & Transplantation	Elective Care / Theatres	Emergency Care	NHS @ home
Specialty Lead	Chris Newell	UGI: Chris Wong Colorectal: Anne Pullyblank	Devan Thavarajan	Michelle Mullan	Plastic Surgery: Ewan Wilson Burns: Chris Wearn Dermatology: Helen Audrain	Aditya Manjunath	Clinton Lobo	Renal: Jack Galliford Transplant: Sam Turner	Philippa Jackson	Christopher Thompson	Rebecca Winterborn
General Managers	Jay Parry	Joshua Williams-Pitt	Liam Hancock	Jay Parry	Joanne Smart	John Kirby	James Taylor	Liam Hancock	James Taylor	Joshua Williams-Pitt	Kane Sullivan
Lead Nurse / Matron	Valentien Crook-Jones Morwenna Maddock	Rosie Malins	Michelle Dyer	Siny Thankachan	Nicola Mackey	Rosie Malins	Dawn Hird	Lisa Ford	Dawn Hird / Damien Crosswell	Lucinda Saunders	

Core Clinical Services

Core Clinical Services management team



Clinical Director
Eleanor Ngan Soo



Divisional
Operations Director
Sarah Robinson

Deputy Divisional
Operations Director
Nickola Gipp



Divisional
Director of Nursing /
Head of Professions
Liz Varian-Peacock

Core Clinical Services corporate support



Finance Business
Partner
Claire Mitchell



People Business
Partner
Karen Cooke

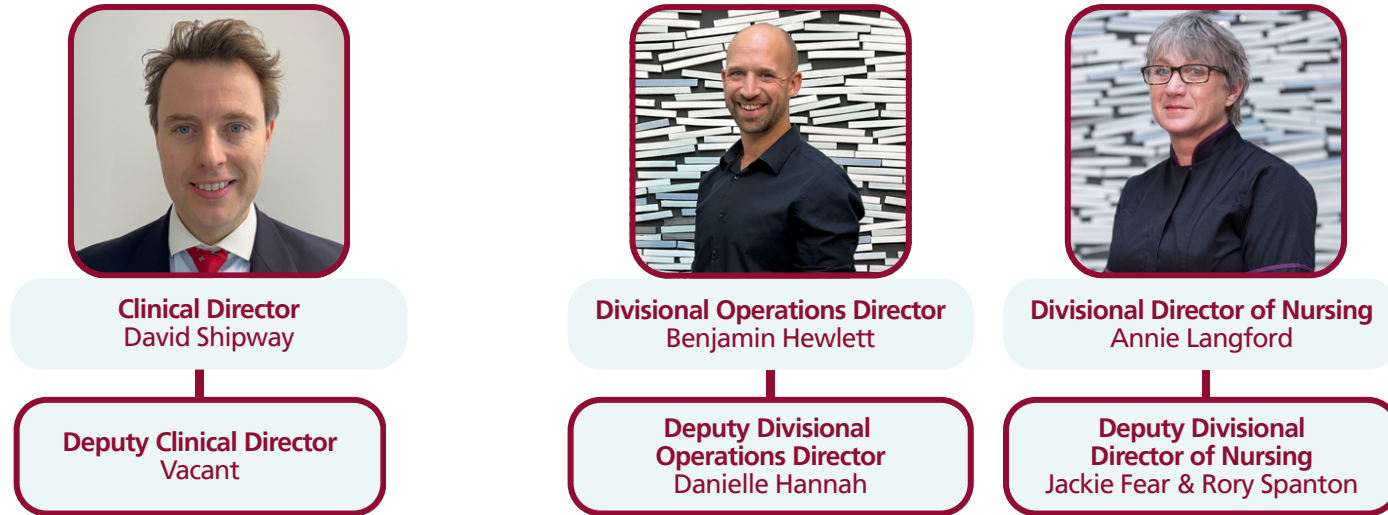


BI Analyst
Mary Wright

Specialties	Imaging	Pathology	Pharmacy	Endoscopy	Therapies	Centralised Outpatient Services	Clinical Equipment Services
Clinical Specialty Lead	Vacant	Isabel Baker		Sam Murray			
Specialty Management Team	<p>Imaging Services Manager: Fiona Rooke</p> <p>Deputy Imaging Services Manager: Sean Fry</p> <p>MRI Modality Lead: Elizabeth Cullimore</p> <p>CT Modality Lead: James Bonner</p> <p>Ultrasound Modality Lead: Patricia Ahmed</p> <p>Plain Film Modality Lead: Paul Hocking</p> <p>Interventional Radiology / Fluoroscopy Modality Lead: Rebecca Warren</p> <p>Nuclear Medicine Modality Lead: Raquel Menezes</p> <p>Imaging Quality Manager: Penny Parcell</p> <p>Head of Medical Photography & Illustration: Dawn White</p>	<p>Director of Pathology Sciences: Nina Stock</p> <p>Blood Sciences Lead: Allison Brixey</p> <p>Blood Sciences Operations Manager: Ellen Roberts</p> <p>Head of Bristol Genetics Laboratory: Maggie Williams</p> <p>Bristol Genetics Laboratory Operations Manager: Elaine Watson</p> <p>Cellular Pathology Laboratory Manager: Saima Rasib</p> <p>Neuropathology Laboratory Manager: Deepthi Chandy</p> <p>Cellular Pathology / Neuropathology Operations Manager: Mark Orrell</p> <p>Infection Sciences Service Manager: Katy Lomas</p>	<p>Director of Pharmacy: Matthew Kaye</p> <p>Deputy Director of Pharmacy: Alison Staples</p> <p>Associate Director of Pharmacy - Clinical Services: Tom Gruar</p> <p>Associate Director of Pharmacy - Operations: Deborah Breton</p> <p>Regional Quality Control Laboratory Manager: Chris Marks</p>	<p>Endoscopy Services Manager: Fiona Rooke</p> <p>Deputy Endoscopy Services Manager: Sean Fry</p> <p>Performance and Operations Manager: Matthew Darvill</p>	<p>Therapies Quality Manager: Steve Bunce</p> <p>Physiotherapy Lead: Kathryn Binns</p> <p>Speech & Language Therapy Lead: Catherine Hamilton</p> <p>Nutrition & Dietetics Lead: Katherine Barker</p> <p>Occupational Therapy Lead: Anne Barraud</p>	<p>General Manger: Lorraine Lewis</p> <p>Assistant General Manager: Nicky Upton</p>	<p>Head of Clinical Equipment Services: Aggie Dimunge</p> <p>Quality & Community Manager: Emma Chabowski</p> <p>MDSO / Anaesthetics: Paul Derman</p> <p>Electronics & Library: Gareth Lewis</p> <p>Beds & Mattresses: Kevin Brooksby</p> <p>Mechanical: Craig Wheeler</p> <p>Training Lead: Lisa Smith</p>

Medicine

Medicine management team



Medicine corporate support



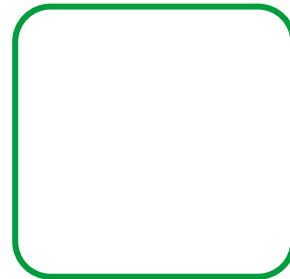
Specialties	Custer 1						Cluster 2				Cluster 3					Specialised Services				
	Emergency Medicine	SDEC	Acute Medicine	Mental Health Liaison	Clinical Psychology	Acute Response Team	Care of the Elderly	Immunology & Allergy	Medical Virology / HIV	Infectious Diseases	Substance Misuse Service	Hepatology	Gastroenterology	Medical Day Care	Diabetes & Endocrinology	Respiratory	Cardiology	Palliative Medicine	Clinical Haematology	Acute Oncology
Specialty Lead	Jayne Mckinlay	Sarah Ibitoye	Louise Powter	Anish Patel	Charlie Jones	Rhiannon Hughes	Anna O'Brien	Mark Gompels	Phil Bright	Ed Moran & Megan Jenkins	N/A	Ankur Srivastava	N/A	Liz Cheyne	Milly Clive	Chih Wong	Laura Bernstein	Alastair Whiteway	N/A	N/A
Matron	Charlotte Chylewski & Anna Bell	N/A	Emily Watts & Shelly Panayiotou	N/A	N/A	Lisa Haines	George Duffield	N/A	Emma Gilchrist	N/A	N/A	Emma Gilchrist	N/A	Bev Davies	Lisa Haines	N/A	N/A	N/A	N/A	N/A
Nurse Lead	N/A	Rachel Dean	N/A	Ben Ford	N/A	N/A	N/A	Lisa Smith	N/A	N/A	Sally Quigley	Katharine Caddick	N/A	N/A	Nicki Davies	N/A	N/A	Sona McIntosh & Lisa Thomas	Aless Bartlett	N/A
General Manager	Lorna Gregory						Christina Fletcher				Graham Bartlett					Nicola Alfonsi AGM Natalie Smith				
Specialty Manager	Alex O'Donoghue & Elliott Main						Nia Jenkins Welch				Abigail Warren & Jade Venning					Zahra Dahnoun & Lisa Reed				
Support Manager	Sophie Power						Alexandria Davis & Laura Webb				Kelly West , Courtney Borg & Megan Smith					Kate White & Jade Hinder				

Neurological & Musculoskeletal Sciences (NMSK)

NMSK management team



Clinical Director
Harsha Gunawardena



Divisional Operations Director
Ginny Nash

Deputy Divisional Operations Director
Joanna Smithers & Tom Woodward



Interim Divisional Director of Nursing
Hannah Moore

NMSK corporate support



Finance Partner
Joshua Skinner



People Partner
Hannah Stawrowski



BI Analyst
Sarah Cox

Specialties	Cluster 1			Cluster 2		Cluster 3						Cluster 4	Bristol Centre for Enablement	Major Trauma Centre
	Neurosurgery	Spines	Pain	Elective Orthopaedics	Trauma	Acute Neurology	Sub Specialty Neurology	Rheumatology	Neuropsychiatry	Neuropsychology	Neurophysiology	Stroke		
Specialty Lead	Adam Williams	Mike Katsihimas	Shelley Barnes	Mark Crowther	Andrew Riddick	Justin Pearson	Mark Cossburn	Lynsey Clarke	Anish Patel	Angelita Cruz	Peter Walsh	James Dodd	Shigong Guo	Nirosha De Zoysa
General Manager	Tom Gardener			Millie Collins		Ellicia Sulway						Linda Matthews Jon Porter	David Rowland	N/A
Matron	Debbie Beynon			Natalie Wood		Rachael Crowley						Emerline Albano	N/A	N/A
Ward Manager	Helen Lincoln Rosie Morris	Alex Deas Grace Jones	Rose Marriott	Hiu Ying Harris Helen Jones	Jordan Highnell Elspeth Knight	Tanya Matthews Helen Coxon Maria Arriola		N/A	Lisa Nikitin	N/A	N/A	Tanya Matthews Helen Coxon Maria Arriola	N/A	NA

Women & Children's Health

Women & Children's management team



Clinical Director
Jane Mears



Divisional
Operations Director
Claire Weatherall



Divisional
Director of Midwifery
Nursing
Julie Northrop

Deputy Divisional
Directors of Midwifery
and Nursing
Laura Gold & Diane
Dorrington



Women & Children's corporate support



Finance Partner
Jess Jones



Interim People Partner
Rebecca Wright



BI Analyst
Helen Fenn

Specialties	Perinatal	Gynaecology
Specialty Lead	Obstetrics: Dr Joanna Crofts NICU: Dr Faith Emery	Dr Chendrihada Madhu
General Manager	Louise Wallace Charlotte Bryan	Aaron Joyce
Matron	Intrapartum Service and Home Birth Service: Nicola Chinnock Community: Margaret Smith Antenatal Services: Antenatal Clinic, Fetal Medicine, Screening & Quantock Ward: Bonny Wood Postnatal Services: Percy Phillips Ward & Transitional Care Ward: Bonny Wood Continuous Improvement and Learning Lead: Ruth Gregory and Ella Sandford Recruitment, retention and Wellbeing: Liz Haines Perinatal Education: Jo Hunt NICU and Paediatric Outpatients: Amy Purnell	Mirko De Santis
Ward Manager	Percy Phillips Ward: Rachel Cox and Nina Ishii Quantock Ward: Carli Roberts Triage and Assessment Unit: Lisa Redmayne Mendip Birth Centre: Abi Johnson Home Birth Team: Beth Connelly Central Delivery Suite: Bridget Touhy and Emily Slater Antenatal Clinic: Amy Crosby NICU: Fiona Buckley Community: Hayley Scull, Vanessa Lanham-Cook, Kate Thomas, Libby Hutchinson, Gaynor Jackson, Tracy Wharrier Monica Carter, Bethany Rowell, Eloise Alexander, Kelly Partridge	Cotswold Ward: Nix Carey