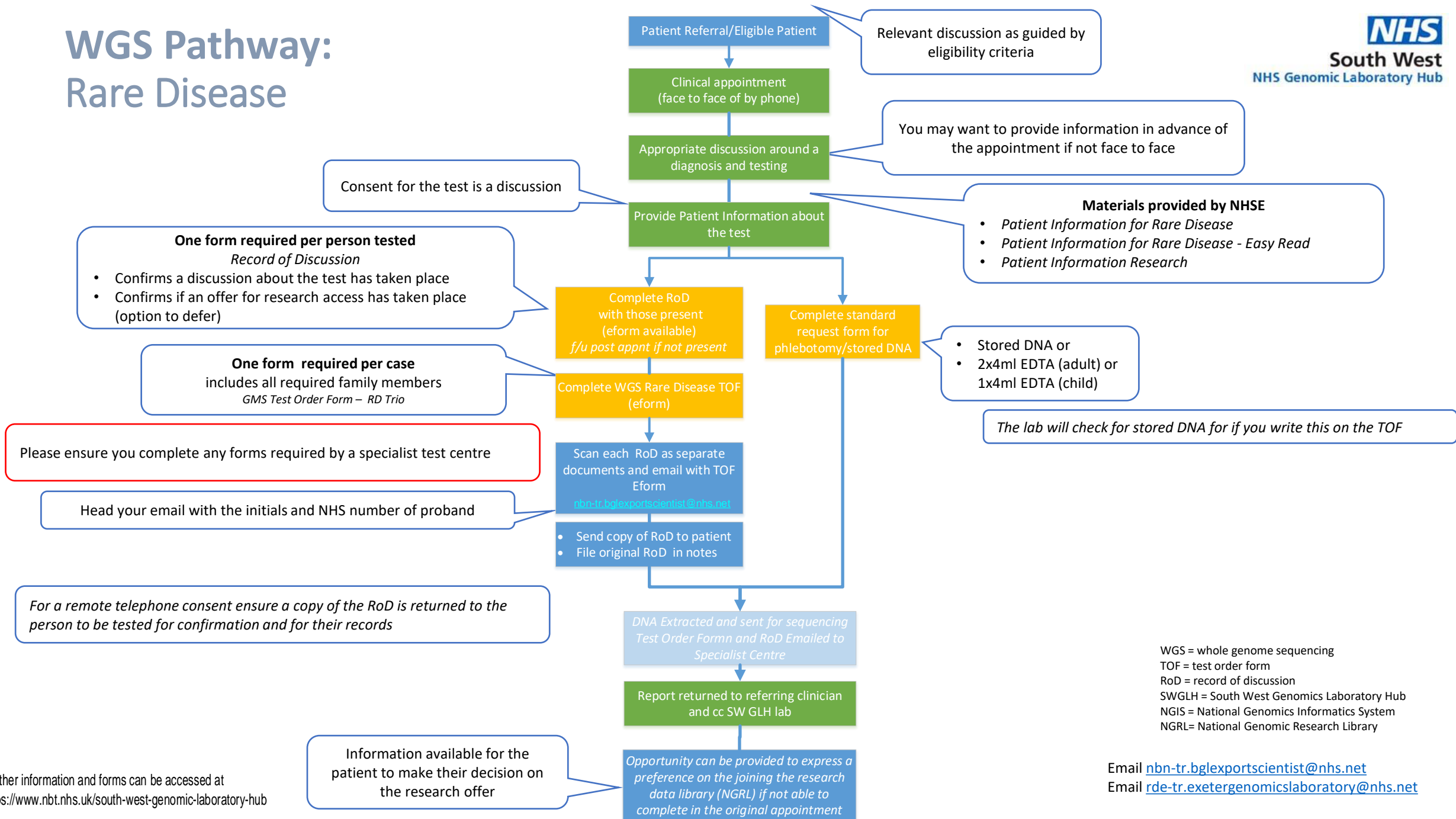


WGS Pathway: Rare Disease



WGS = whole genome sequencing
TOF = test order form
RoD = record of discussion
SWGLH = South West Genomics Laboratory Hub
NGIS = National Genomics Informatics System
NGRL = National Genomic Research Library

Email nbn-tr.bglexportscientist@nhs.net
Email rde-tr.exetergenomicslaboratory@nhs.net