

# Organisational structure chart

## Clinical Divisions

April 2025



# Trust Board



**Joint Chair of  
NBT & UHBW**  
Ingrid Barker



**Joint Chief Executive of  
NBT & UHBW**  
Maria Kane

## Executive Directors



**Hospital Managing  
Director**  
Glyn Howells



**Chief Operating  
Officer**  
Nick Smith



**Chief Medical  
Officer**  
Tim Whittlestone



**Chief Nursing  
Officer**  
Steve Hams



**Chief Finance  
Officer**  
Elizabeth Poskitt



**Chief People  
Officer**  
Peter Mitchell



**Joint Chief Digital  
Information Officer,  
NBT and UHBW**  
Neil Darvill

## Non-Executive Directors



Kelvin Blake



Kelly Macfarlane



Richard Gaunt



Sarah Purdy



Jane Khawaja



Shawn Smith



**Director of Corporate  
Governance & Trust  
Secretary**  
Xavier Bell

# 5 Clinical Divisions

**Anaesthesia,  
Surgery,  
Critical Care  
and Renal  
(ASCR)**



**Clinical Director**  
Andrew Smith

**Core Clinical  
Services**



**Clinical Director**  
Albert Power

**Medicine**



**Clinical Directors**  
Ella Chaudhuri & Jarrod Richards

**Neurological &  
Musculoskeletal  
Sciences  
(NMSK)**



**Clinical Director**  
Harsha Gunawardena

**Women &  
Children's  
Health**



**Clinical Director**  
Jane Mears

# Anaesthesia, Surgery, Critical Care and Renal (ASCR)

## ASCR management team



**Clinical Director**  
Andrew Smith



**Divisional Operations Director**  
Harriet Livesey



**Divisional Director of Nursing**  
Shelley Thomas

**Deputy Divisional Operations Director**  
Kirsty Pinner

**Deputy Divisional Directors of Nursing**  
Matthew Crabtree & Kelly Bullock

## ASCR corporate support



**Interim Finance Partner**  
Pawel Abramik



**People Partner**  
Katie Cooke



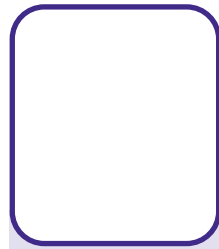
**BI Analyst**  
Catherine Ridley

Specialties	Critical Care	General Surgery	Vascular Network	Breast Services	Plastic, Burns & Dermatology	Urology	Anaesthesia inc. Pre-operative Assessment	Renal & Transplantation	Elective Care / Theatres	Emergency Care	NHS@home
<b>Specialty Lead</b>	Chris Newell	<b>UGI</b> – Chris Wong  <b>Colorectal</b> – Anne Pullyblank	Devan Thavarajan	Michelle Mullan	<b>Plastic Surgery</b> - George Wheble  <b>Burns</b> – Chris Wearn  <b>Dermatology</b> – Helen Audrain	Kate Warren	Clinton Lobo	<b>Renal</b> - James Bushnell/ Jack Galliford  <b>Transplant</b> - Sam Turner	Philippa Jackson	Christopher Thompson	Rebecca Winterborn
<b>General Managers</b>	Jay Parry	Josh Pitt		Jay Parry Gemma Quick	Joanne Smart	John Kirby	James Taylor	Liam Hancock	James Taylor	Josh Pitt	Kirsty Pinner
<b>Lead Nurse / Matron</b>	Valentin Crook-Jones	Rosie Malins	Siny Thankachan		Nicola Mackey	Rosie Malins	Dawn Hird	Lisa Ford	Dawn Hird/ Damien Crosswell	Lucinda Saunders	



# Core Clinical Services

## Core Clinical Services management team



**Clinical Director**  
Vacant



**Divisional Operations Director**  
Sarah Robinson

**Deputy Divisional Operations Director**  
Nickola Gipp



**Divisional Director of Nursing / Head of Professions**  
Liz Varian-Peacock

## Core Clinical Services corporate support



**Finance Partner**  
Claire Mitchell



**People Partner**  
Karen Cooke



**BI Analyst**  
Mary Wright

Specialties	Imaging	Pathology	Pharmacy	Endoscopy	Therapies	Centralised Outpatient Services	Clinical Equipment Services
<b>Clinical Specialty Leads</b>	Vacant	Dr Isabel Baker		Dr Ana Terlevich			
<b>Specialty Management Team</b>	<b>Imaging Services Manager:</b> Fiona Rooke  <b>Deputy Imaging Services Manager:</b> Sean Fry  <b>MRI Modality Lead:</b> Elizabeth Cullimore  <b>CT Modality Lead:</b> James Bonner  <b>Ultrasound Modality Lead:</b> Patricia Ahmed  <b>Plain Film Modality Lead:</b> Paul Hocking  <b>Interventional Radiology/Fluoroscopy Modality Lead:</b> Rebecca Warren  <b>Nuclear Medicine Modality Lead:</b> Raquel Menezes  <b>Imaging Quality Manager</b> Penny Parcell  <b>Head of Medical Photography &amp; Illustration:</b> Dawn White	<b>Director of Pathology Sciences:</b> Nina Stock  <b>Blood Sciences Lead:</b> Allison Brixey  <b>Blood Sciences Operations Manager:</b> Joanne Skingley  <b>Head of Bristol Genetics Laboratory:</b> Maggie Williams  <b>Bristol Genetics Laboratory Operations Manager:</b> Elaine Watson  <b>Cellular Pathology Laboratory Manager:</b> Saima Rasib  <b>Neuropathology Laboratory Manager</b> Deepthi Chandry  <b>Cellular Pathology / Neuropathology Operations Manager:</b> Mark Orrell  <b>Infection Sciences Laboratory Manager:</b> Katy Lomas	<b>Director of Pharmacy:</b> Matthew Kaye  <b>Deputy Director of Pharmacy:</b> Alison Staples  <b>Associate Director - Clinical Services:</b> Vacant  <b>Associate Director - Medicines Governance:</b> Colm McKenzie  <b>Associate Director of Pharmacy - Operations:</b> Deborah Brenton  <b>Regional Quality Control Laboratory Lead Pharmacist:</b> Oonagh Farr  <b>Regional Quality Control Laboratory Manager:</b> Chris Marks	<b>Endoscopy Services Manager:</b> Fiona Rooke  <b>Deputy Endoscopy Services Manager:</b> Sean Fry  <b>Performance and Operations Manager,</b> Matthew Darvill	<b>Therapies Quality Manager:</b> Steve Bunce  <b>Physiotherapy Lead:</b> Kathryn Binns  <b>Speech &amp; Language Therapy Lead:</b> Catherine Hamilton  <b>Nutrition &amp; Dietetics Lead:</b> Katherine Barker  <b>Occupational Therapy Lead:</b> Anne Barraud	<b>General Manager:</b> Lorraine Lewis  <b>Assistant General Manager:</b> Nicky Upton  <b>Performance and Operations Manager</b> Sarah Walters	<b>Head of Clinical Equipment Services:</b> Agraja Dimunge  <b>Quality &amp; Community Manager</b> Emma Broom  <b>MDSO / Anaesthetics</b> Paul Derman  <b>Electronics &amp; Library</b> Gareth Lewis  <b>Beds &amp; Mattresses</b> Kevin Brooksby  <b>Mechanical</b> Craig Wheeler  <b>Training Lead</b> Lisa Smith

# Medicine

## Medicine management team



**Clinical Directors**  
Ella Chaudhuri & Jarrod Richards



**Divisional Operations Director**  
Benjamin Hewlett



**Divisional Director of Nursing**  
Annie Langford

**Deputy Clinical Director**  
David Shipway

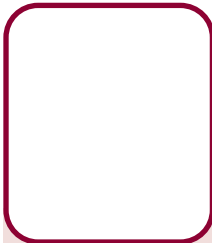
**Deputy Divisional Operations Director**  
Nina Stock

**Deputy Divisional Directors of Nursing**  
Jackie Fear & Rory Spanton

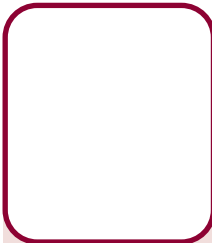
## Medicine corporate support



**Finance Partner**  
Jenny Costley



**People Partner**  
James Caldwell



**BI Analyst**  
Vacant

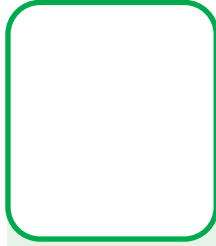
Specialties	Cluster 1					Cluster 2							Cluster 3			Cluster 4	
	Emergency Medicine	Acute Medical Unit	Mental Health Liaison	Clinical Psychology	Hospital at Night	Acute Oncology	Care of the Elderly	Clinical Haematology	Palliative Medicine	Immunology & Allergy	Infectious Diseases	HIV	Diabetes & Endocrinology	Gastroenterology & Hepatology	Medical Day Care	Cardiology	Respiratory
Specialty Lead	Jayne McKinley	Louise Powter	Anish Patel	Charlie Jones	Rina Adhikary	Aless Bartlett	Anna O'Brien	Alastair Whiteway	Anila Brigham	Mark Gompels	Ed Moran	Phil Bright	Fong Chau	Leonard Griffiths		Chih Wong	Peter Creber
Matron	Anna Bell, Shelley Panayiotou, Emily Watts & Lisa Haines					Jet O'Neill, George Duffield							Emma Gilchrist			Bev Davies	
General Manager	Danielle Hannah					Christina Fletcher							Graham Bartlett			Nicola Alfonsi	
Specialty Manager	Zahra Dahnoun & Jade Venning					Anna Bassadone							Paul Cousins	Abi Warren		Natalie Smith	
Support Manger	Mariam Alauddin					Alex Davis				Laura Webb			Kelly Thompson	Courtney Borg		Elliott Main	Alec Gear

# Neurological & Musculoskeletal Sciences (NMSK)

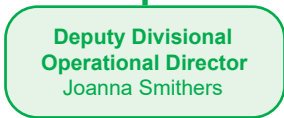
## NMSK management team



**Clinical Director**  
Harsha Gunawardena



**Interim Divisional  
Operations Director**  
Tom Woodward



**Deputy Divisional  
Operational Director**  
Joanna Smithers



**Divisional Director  
of Nursing**  
Mike Puckey



**Deputy Divisional  
Director of Nursing**  
Hannah Moore

## NMSK corporate support



**Finance Partner**  
John Sharpe



**People Partner**  
Anthony Dorman



**BI Analyst**  
Sarah Cox

Specialties	Cluster 1			Cluster 2		Cluster 3						Cluster 4		
	Neurosurgery	Spines	Pain	Elective Orthopaedics	Trauma	Acute Neurology	Sub Specialty Neurology	Rheumatology	Neuropsychiatry	Neuropsychology	Neurophysiology	Stroke	Bristol Centre for Enablement	Major Trauma Centre
Specialty Lead	Adam Williams	Mike Katsihimas	Shelley Barnes	Mark Crowther	Andrew Riddick	Justin Pearson	Mark Cossburn	Lynsey Clarke	Anish Patel	Angelita Cruz	Peter Walsh	James Dodd	Shigong Guo	Nirosha De Zoysa
General Manager	Tom Gardener			Millie Collins		Ellicia Sulway						Linda Matthews Jon Porter	David Rowland	N/A
Matron	Debbie Beynon			Natalie Wood		Rachael Crowley						Emerline Albano	N/A	N/A
Ward Manager	Helen Lincoln Rosie Morris	Alex Deas Grace Jones	Rose Marriott	Hiu Ying Harris Helen Jones	Jordan Hignell Elspeth Knight	Tanya Matthews Helen Coxon Maria Arriola	N/A	N/A	Lisa Nikitin	N/A	N/A	Tanya Matthews Helen Coxon Maria Arriola	N/A	N/A

# Women & Children's Health

## Women & Children's management team



**Clinical Director**  
Jane Mears



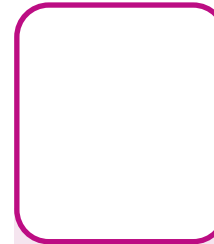
**Divisional Operations Director**  
Claire Weatherall



**Divisional Director of Midwifery and Nursing**  
Julie Northrop

**Deputy Divisional Directors of Midwifery and Nursing**  
Laura Gold  
Diana Dorrington

## Women & Children's corporate support



**Finance Partner**  
Jess Jones



**People Partner**  
Nicola Marvelley



**BI Analyst**  
Helen Fenn

Specialties	Perinatal	Gynaecology
<b>Specialty Lead</b>	Obstetrics - Dr Joanna Crofts NICU - Dr Faith Emery	Dr Chendrimada Madhu
<b>General Manager</b>	Louise Wallace Charlotte Bryan	Lauren Roberts
<b>Matron</b>	Intrapartum Service and Home Birth Service - Nicola Chinnock Community - Margaret Smith Antenatal Services: Antenatal Clinic, Fetal Medicine, Screening & Quantock Ward - Bonny Wood Postnatal Services: Percy Phillips Ward & Transitional Care Ward - Bonny Wood Continuous Improvement and Learning Lead - Ruth Gregory and Yasmin Riddall Recruitment, retention and Wellbeing - Vacant Perinatal Education - Jo Hunt NICU and Paediatric Outpatients - Amy Purnell	Mirko De Santis
<b>Ward Manager</b>	Percy Phillips Ward - Rachel Cox and Nina Ishii Quantock Ward - Carli Roberts Triage and Assessment Unit - Lisa Redmayne Mendip Birth Centre - Beth Thornley Home Birth Team - Beth Connelly Central Delivery Suite - Bridget Touhy and Emily Slater Antenatal Clinic - Amy Crosby NICU - Fiona Buckley	Cotswold Ward – Nix Carey